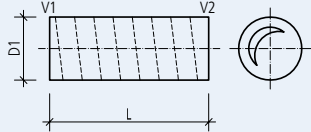


Tubes et pièces de forme (DIN)

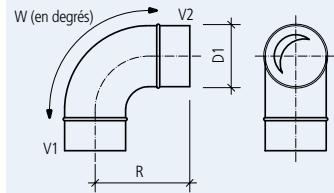
Feuille technique et de commande 2020

Récapitulatif productions tubes et pièces de forme (DIN)

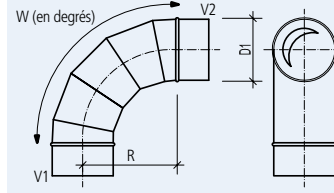
SR tubes



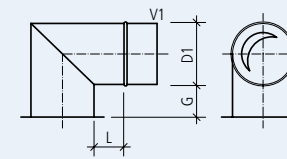
B/BU coude



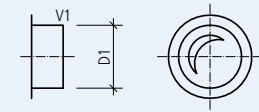
BF/BFU coude à segment



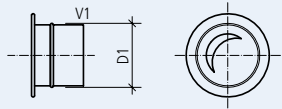
SK/SKU coude de coffrage



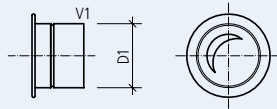
IL/ILU piquage plat



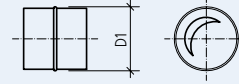
EM/ESU couvercle



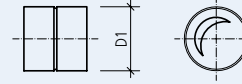
EPF/EPU couvercle pour pièces de forme



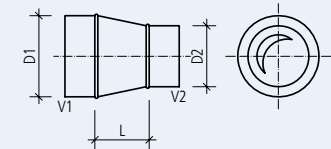
NP/NPU manchon intérieur



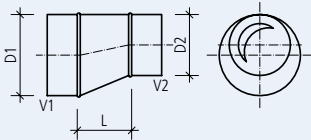
MF manchon extérieur



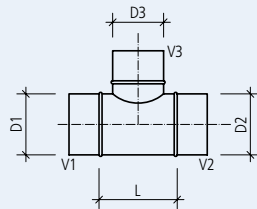
RCL/RCLU réduction centrique



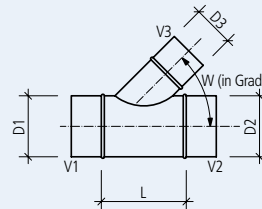
RL/RLU réduction excentrique



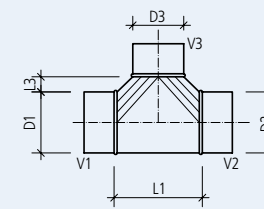
TCP/TCPU té 90°



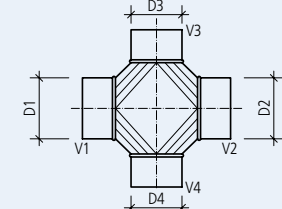
TV/TVU té avec angle



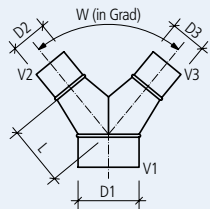
TC/TCU té avec dérivateur 90°



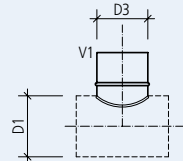
XCP/XCPU pièce en crois 90°



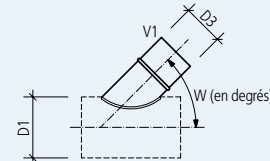
YV/YVU culotte



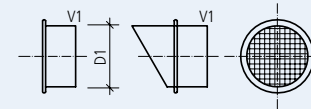
PS/PSU piquage sur tube



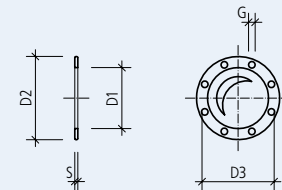
PSV/PSVU piquage sur tube avec angle



EMG grille à mailles 90°/30°



FL flansque



dresohn
Innovation im Lüftungsbau

Dresohn AG
Im Grindel 39
CH-8932 Mettmenstetten

Tel.: +41 43 466 77 99
info@dresohn.ch
www.dresohn.ch